

STANDARD FEED THROUGH TERMINAL BLOCKS

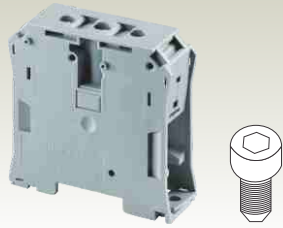


With Allen screw

Width (Thickness) x Length	20.5 x 77.3 mm				20.5 x 77.3 mm				
Height with DIN 35 x 7.5 / 35 x 15 / 32 mm Rail	71.1 mm / 78.1 mm				71.1 mm / 78.1 mm				
Connection Possibility as per	IEC		UL - CSA		IEC		UL - CSA		
	With 1 Conductor per clamp	Stranded / Flexible with Ferrule / Lug	10.0 - 70.0 mm ²	10.0 - 70.0 mm ²	8 - 2/0 AWG	8 - 2/0 AWG	10.0 - 70.0 mm ²	10.0 - 70.0 mm ²	8 - 2/0 AWG
With 2 same size Conductors per clamp	Stranded / Flexible	10.0 - 35.0 mm ²	8 - 2 AWG	10.0 - 35.0 mm ²	8 - 2 AWG	10.0 - 35.0 mm ²	8 - 2 AWG	10.0 - 35.0 mm ²	8 - 2 AWG
Wire Stripping Length	22 mm				22 mm				
Ratings As Per	IEC60947-7-1	UL-1059	CSA22.2-158		IEC60947-7-1	UL-1059	CSA22.2-158		
Voltage	1000 V	1000 V	1000 V		1000 V	1000 V	1000 V		
Current	192 A	175 A	175 A		192 A	175 A	175 A		
Torque	3.0 Nm	38 lb-in	38 lb-in		3.0 Nm	38 lb-in	38 lb-in		
Approvals									
Insulation Material / Comparative Tracking Index	Polyamide 66 / 1				Polyamide 66 / 1				
Rated Impulse Voltage / Pollution Degree	8 KV / 3				8 KV / 3				
	Type / Cat. No.		Standard Pack		Type / Cat. No.		Standard Pack		
Terminal Block	CTS50/70N		20		CTS50/70NA		20		
Auxiliary / Pick Off Terminal	AUX6		10		AUX6		10		
Mounting Rail (Refer Pg. 154 for details)	CA701		50 m		CA701		50 m		
	CA701-15		50 m		CA701-15		50 m		
End Clamp (Refer Pg. 155 for details)	CA202		50		CA202		50		
	CA102		50		CA102		50		
Shorting Link System	2 pole	CA628/2	I _{max.} : 192 A		10	CA628/2	I _{max.} : 192 A		10
	3 pole	CA628/3	192 A		10	CA628/3	192 A		10
Marking Tags (Refer Pg. 157 for details)	CA509/K16		100		CA509/K16		100		



CTS95/120N



With Allen screw

27 x 84.5 mm

83.0 mm / 90.5 mm

IEC	UL - CSA
25.0 - 120.0 mm ²	2 - 250 kcmil
25.0 - 120.0 mm ²	2 - 250 kcmil

25.0 - 70 mm² 2 - 2/0 AWG

24 mm

IEC60947-7-1 UL-1059 CSA22.2-158

1000 V	1000 V	1000 V
269 A	240 A	240 A
6.0 Nm	90 lb-in	90 lb-in



Polyamide 66 / 1

8 KV / 3

Type / Cat. No.	Standard Pack
CTS95/120N	10
AUX6	10
CA701	50 m
CA701-15	50 m

CA202	50	
CA102	50	
CA629/2	Imax.: 269 A	10
CA629/3		10
CA509/K16	100	

AUX6 (Auxiliary Terminal Block)

In certain power circuits, there is a need to take an extra connection for an Auxiliary circuit like an indicating light or contactor. The AUX6 terminal easily plugs into the terminal and provides this extra connection point.



8 x 53.6 x 29.4 mm

Width (Thickness) x Length x Height

With 1 Conductor per clamp	Stranded / Flexible	0.5 - 6.0 mm ²	22 - 8 AWG
	Solid with Ferrule / Lug	0.5 - 10.0 mm ²	22 - 6 AWG
With 2 same size Conductors per clamp	Stranded / Flexible	0.5 - 6.0 mm ²	22 - 8 AWG
	with TWIN Ferrule / Lug	0.5 - 4.0 mm ²	22 - 10 AWG
		0.5 - 4.0 mm ²	22 - 10 AWG

Ratings As Per

Voltage

Current

Torque

IEC60947-7-1	IEC 60079-7	UL-1059	CSA22.2-158
1000 V	630 V	600 V	600 V
41 A	36 A	50 A	50 A
0.8 Nm	0.8 Nm	14 lb-in	14 lb-in

Auxiliary Terminal

Type / Cat. No.	Standard Pack	Suitable For
AUX6	10	CTS50/70N CTS50/70NA CTS95/120N
CA509/K8	100	AUX6

Marking Tag

