

DISCONNECT & TEST TERMINAL BLOCKS

These blocks are used for measuring, control and regulatory circuits.

In CKT4U & CKT4U/4 Disconnection is achieved by lifting a lever which operates the knife contact.

Specially designed socket headed screws act as test monitoring points in these Terminal Blocks.

CKT4U/S is another version of CKT4U Terminal Block in which regular slotted screws are used instead of specially designed socket headed screws.

CKT4SP terminal provides a possibility of using an internal shorting link for cross connection.

CF4SPFT feed through terminals have the same profile as that of the CF4SP and CKT4SP Terminal Block.

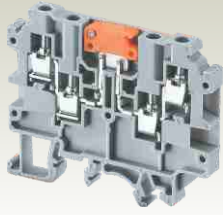
CF4SP & CKT4SP series terminal are completely closed and do not need a separate end plate.

CKT4U



Width (Thickness) x Length		6 x 46.3 mm			
Height with DIN 35 x 7.5 / 35 x 15 / 32 mm Rail		48.3 mm / 56.0 mm / 54.5 mm			
Connection Possibility as per		IEC		UL - CSA	
With 1 Conductor per clamp	Stranded / Flexible	0.2 - 4.0 mm ²		22 - 10 AWG	
	Solid with Ferrule / Lug	0.2 - 6.0 mm ²		22 - 10 AWG	
With 2 same size Conductors per clamp	Stranded / Flexible	0.2 - 4.0 mm ²		22 - 10 AWG	
	with TWIN Ferrule / Lug	0.2 - 2.5 mm ²		22 - 12 AWG	
Wire Stripping Length		8 mm			
Ratings As Per		IEC60947-7-1	UL-1059	CSA22.2-158	
Voltage		800 V	600 V	600 V	
Current		28 A	35 A	16 A	
Torque		0.5 Nm	7 lb-in	7 lb-in	
Approvals					
Insulation Material / Comparative Tracking Index		Polyamide 66 / 1			
Rated Impulse Voltage / Pollution Degree		8 KV / 3			
		Type / Cat. No.		Standard Pack	
Terminal Block		With Socket Headed Screw		CKT4U	
		With Standard Slotted Screw		CKT4U/S	
End Plate				EPCKT4U	
Mounting Rail (Refer Pg. 154 for details)				CA701	
				CA701-15	
				CA501	
End Clamp (Refer Pg. 155 for details)				CA702	
				CA802	
Pre Assembled Shorting Links		2 pole			
		3 pole			
		4 pole			
		10 pole			
		100 pole			
Insulated Pre Assembled Shorting Link		2 pole			
		3 pole			
		4 pole			
		10 pole			
		100 pole			
Permanent Shorting Links		2 pole			
		3 pole			
		4 pole			
		10 pole			
		10 pole (Breakable)			
		100 pole			
Short Sleeve & Screw for Permanent Shorting Links					
Insulated External Shorting Links		2 pole		CA714/2	
		3 pole		CA714/3	
		4 pole		CA714/4	
		10 pole		CA714/10	
Marking Tags (Refer Pg. 157 for details)				CA509/K6	
Screw Driver		SCS0.6/3.5		Blade size: 0.6 x 3.5 mm	
				100	
				50	
				50	
				20	
				32 A	
				32 A	
				32 A	
				100	
				10	

CKT4U/4



6 x 65 mm

54.3 mm / 62.0 mm / 60.5 mm

IEC	UL - CSA
0.2 - 4.0 mm ²	22 - 10 AWG
0.2 - 6.0 mm ²	
0.2 - 4.0 mm ²	22 - 10 AWG
0.2 - 2.5 mm ²	22 - 12 AWG
0.2 - 2.5 mm ²	22 - 12 AWG

8 mm

IEC60947-7-1 UL-1059 CSA22.2-158

800 V	600 V	600 V
17.5 A	20 A	20 A
0.5 Nm	7 lb-in	7 lb-in

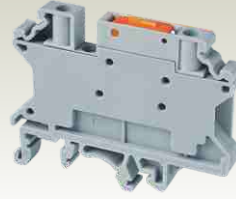


Polyamide 66 / 1

8 KV / 3

Type / Cat. No.	Standard Pack
CKT4U/4 *	100
EPCKT4U/4	50
CA701	50 m
CA701-15	50 m
CA501	50 m
CA702	50
CA802	50
CA714/2 [#]	Imax.: 32 A 100
CA714/3	32 A 100
CA714/4	32 A 100
CA714/10	32 A 20
CA509/K6	100
SCS0.6/3.5 Blade size: 0.6 x 3.5 mm	10

CKT4SP



6 x 58.5 mm

46.0 mm / 53.5 mm / 51.5 mm

IEC	UL - CSA
0.2 - 4.0 mm ²	24 - 10 AWG
0.2 - 6.0 mm ²	
0.2 - 4.0 mm ²	24 - 10 AWG
0.2 - 2.5 mm ²	24 - 12 AWG
0.2 - 2.5 mm ²	24 - 12 AWG

8 mm

IEC60947-7-1 UL-1059

1000 V	600 V
28 A	30 A
0.5 Nm	4.5 lb-in

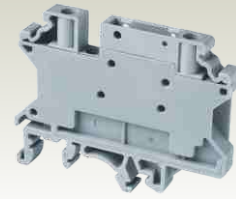


Polyamide 66 / 1

8 KV / 3

Type / Cat. No.	Standard Pack
CKT4SP	50
CA701	50 m
CA701-15	50 m
CA501	50 m
CA702	50
CA802	50
CA722/2	Imax.: 32 A 100
CA722/3	32 A 100
CA722/4	32 A 100
CA722/10	32 A 10
CA722/100	32 A 10
CA742/2	Imax.: 32 A 100
CA742/3	32 A 100
CA742/4	32 A 100
CA742/10	32 A 10
CA742/100	32 A 10
CA703/1	Imax.: 32 A 100
CA704/1	32 A 100
CA705/1	32 A 100
CA732/10	32 A 100
CA732/10-A	32 A 100
CA732/100	32 A 10
CA707/S/Q/01	100
CA714/2	Imax.: 32 A 100
CA714/3	32 A 100
CA714/4	32 A 100
CA714/10	32 A 20
CA509/K6	100
SCS0.6/3.5 Blade size: 0.6 x 3.5 mm	10

CF4SPFT



6 x 58.5 mm

46.0 mm / 53.5 mm / 51.5 mm

IEC	UL - CSA
0.2 - 4.0 mm ²	24 - 10 AWG
0.2 - 6.0 mm ²	
0.2 - 4.0 mm ²	24 - 10 AWG
0.2 - 2.5 mm ²	24 - 12 AWG
0.2 - 2.5 mm ²	24 - 12 AWG

8 mm

IEC60947-7-1 UL-1059

1000 V	600 V
32 A	30 A
0.5 Nm	4.5 lb-in



Polyamide 66 / 1

8 KV / 3

Type / Cat. No.	Standard Pack
CF4SPFT	50
CA701	50 m
CA701-15	50 m
CA501	50 m
CA702	50
CA802	50
CA722/2	Imax.: 32 A 100
CA722/3	32 A 100
CA722/4	32 A 100
CA722/10	32 A 10
CA722/100	32 A 10
CA742/2	Imax.: 32 A 100
CA742/3	32 A 100
CA742/4	32 A 100
CA742/10	32 A 10
CA742/100	32 A 10
CA703/1	Imax.: 32 A 100
CA704/1	32 A 100
CA705/1	32 A 100
CA732/10	32 A 100
CA732/10-A	32 A 100
CA732/100	32 A 10
CA707/S/Q/01	100
CA714/2	Imax.: 32 A 100
CA714/3	32 A 100
CA714/4	32 A 100
CA714/10	32 A 20
CA509/K6	100
SCS0.6/3.5 Blade size: 0.6 x 3.5 mm	10

* CKT4U/4 Terminal has standard screws on the upper level clamps and socket screws on the lower level clamps.

Insulated External shorting links can be used only in the upper level clamping unit of the Terminal Block.