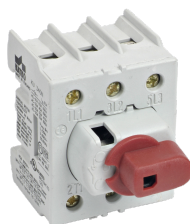
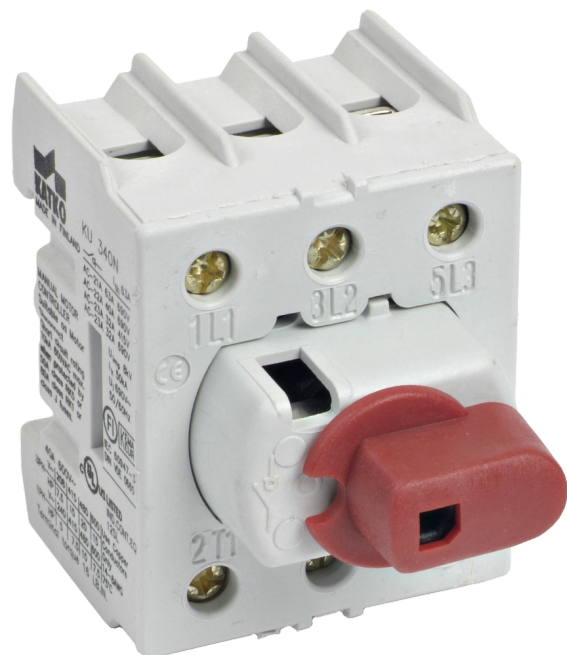


KU 340N

KU Rotary switches 16-125A



Data subject to change without notice. Always confirm the data is correct from the seller.

- Compact size
- DIN-rail mounting
- 3-pole and 4-pole KU-switches as standard
- 2-pole upon request
- 6-pole and 8-pole versions consist of two 3-pole or 4-pole KU-switches connected by a parallel kit
- Switch technology by means of silver contacts ensures safe and durable operation
- 4-pole versions with early-make and late-break neutral pole
- Compatible with handles LK10 and LK11
- Shafts L=100/200/300 AD11 and L=100/200/300 AD11/VT
- Tested according to IEC 60947-3
- Available with **CCC certificate**, mention when ordering

Technical datasheet >>



Product details

SKU	KU 340N
AC-22 400/415 V (A)	40 A
AC-22 690 V (A)	40 A
AC-23 400/415 V (A/kW)	32 A / 15 kW
AC-23 690 V (A/kW)	32 A / 30 kW

Dimensional drawing

Cable Area to Switch

Terminal (mm²) / Bolt size 1.5-16

E-Number 3635101

EAN 6419410214503

Number of Poles 3

Operation Rotary

Switch type Load Break Switch

Weight (kg) 0.19

