








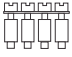

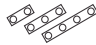
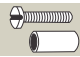

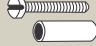




# STANDARD FEED THROUGH TERMINAL BLOCKS

These Feed Through Terminal Blocks are the most versatile terminals for Control, Automation, Instrumentation and Power Distribution applications. A specially designed flexible foot enables easy mounting and dismounting from the DIN rail with the help of a screw driver. These Terminal Blocks have marker holding recesses to accept marking tags for circuit identification. Cross connection can be achieved with the aid of shorting links / sleeves & screws.

The terminals with  & IECEx approval can be used in potentially explosive atmosphere. For detailed information refer page 175.

## CTS2.5UN



Width (Thickness) x Length	5 x 43 mm			
Height with DIN 35 x 7.5 / 35 x 15 / 32 mm Rail	46.2 mm / 53.7 mm / 51.1 mm			
Connection Possibility as per	IEC		UL - CSA	
With 1 Conductor per clamp	Stranded / Flexible	0.2 - 2.5 mm <sup>2</sup>	22 - 12 AWG	
	Solid	0.2 - 4.0 mm <sup>2</sup>	22 - 10 AWG	
	with Ferrule / Lug	0.2 - 2.5 mm <sup>2</sup>	22 - 12 AWG	
With 2 same size Conductors per clamp	Stranded / Flexible	0.2 - 1.5 mm <sup>2</sup>	22 - 16 AWG	
	with TWIN Ferrule / Lug	0.2 - 1.5 mm <sup>2</sup>	22 - 16 AWG	
Wire Stripping Length	8 mm			
Ratings As Per	IEC60947-7-1	UL-1059	CSA22.2-158	IEC 60079-7
Voltage	1000 V	600 V	600 V	690 V
Current	24 A	25 A	25 A	21 A
Torque	0.4 Nm	7 lb-in	7 lb-in	0.4 Nm
Approvals				
Insulation Material / Comparative Tracking Index	Polyamide 66 / 1			
Rated Impulse Voltage / Pollution Degree	8 KV / 3			
	Type / Cat. No.		Standard Pack	
Terminal Block	CTS2.5UN		100	
End Plate 	EP2.5/4UN		50	
Partition Plate 	PP2.5/4UN		50	
Separator Plate 	SP2.5/4UN		100	
Mounting Rail (Refer Pg. 154 for details) 	CA701		50 m	
	CA701-15		50 m	
	CA501		50 m	
End Clamp (Refer Pg. 155 for details) 	CA702		50	
	CA802		50	
Pre Assembled Shorting Links 	2 pole	CA721/2	I <sub>max.</sub> : 24 A	100
	3 pole	CA721/3	24 A	100
	4 pole	CA721/4	24 A	100
	10 pole	CA721/10	24 A	10
	100 pole	CA721/100	24 A	10
Insulated Pre Assembled Shorting Link 	2 pole	CA741/2	I <sub>max.</sub> : 24 A	100
	3 pole	CA741/3	24 A	100
	4 pole	CA741/4	24 A	100
	10 pole	CA741/10	24 A	10
	100 pole	CA741/100	24 A	10
Permanent Shorting Links 	2 pole	CA703/01	I <sub>max.</sub> : 24 A	100
	3 pole	CA704/01	24 A	100
	4 pole	CA705/01	24 A	100
	10 pole	CA731/10	24 A	100
	100 pole (Breakable)	CA731/100	24 A	10
Short Sleeve & Screw for Permanent Shorting Links 	CA707/S/Q/01		100	
Switchable Shorting Links 	CA706/01		I <sub>max.</sub> : 24 A	100
Long Sleeve & Screw for Switchable Shorting Links 	CA707/L/Q/01		100	
Insulated External Shorting Links 	2 pole	CA717/2	I <sub>max.</sub> : 24 A	100
	3 pole	CA717/3	24 A	100
	4 pole	CA717/4	24 A	100
	10 pole	CA717/10	24 A	20
Test Socket 	CA707/TS/01		100	
Marking Tags (Refer Pg. 157 for details) 	CA509/K5		100	
Screw Driver 	SCS0.5/3	Blade size: 0.5 x 3.0 mm	10	

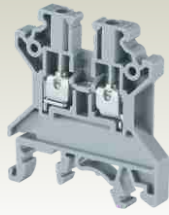
## COLOUR BLOCKS (other than grey standard)

When ordering please add colour suffix to Cat. No.

Example: CTS2.5UNR

Colour		Ordering Suffix
Blue		BU
Black		BK
Orange		O
Red		R
Green		GN
Yellow		Y
White		W
Beige		BG

**CTS2.5UE**



6 x 43 mm

46.2 mm / 53.7 mm / 51.1 mm

IEC	UL - CSA
0.2 - 4.0 mm <sup>2</sup>	22 - 10 AWG
0.2 - 6.0 mm <sup>2</sup>	
0.2 - 4.0 mm <sup>2</sup>	22 - 10 AWG
0.2 - 2.5 mm <sup>2</sup>	22 - 12 AWG
0.2 - 2.5 mm <sup>2</sup>	22 - 12 AWG

8 mm

IEC60947-7-1 UL-1059 CSA22.2-158 IEC 60079-7

1000 V	600 V	600 V	690 V
30 A	30 A	30 A	28 A
0.5 Nm	7 lb-in	7 lb-in	0.4 Nm



Polyamide 66 / 1

8 KV / 3

Type / Cat. No.	Standard Pack
CTS2.5UE	100
EP2.5/4UN	50
PP2.5/4UN	50
SP2.5/4UN	100
CA701	50 m
CA701-15	50 m
CA501	50 m
CA702	50
CA802	50
CA722/2	Imax.: 32 A 100
CA722/3	32 A 100
CA722/4	32 A 100
CA722/10	32 A 10
CA722/100	32 A 10
CA742/2	Imax.: 32 A 100
CA742/3	32 A 100
CA742/4	32 A 100
CA742/10	32 A 10
CA742/100	32 A 10
CA703/1	Imax.: 32 A 100
CA704/1	32 A 100
CA705/1	32 A 100
CA732/10	32 A 100
CA732/10-A	32 A 100
CA732/100	32 A 10
CA707/S/Q/01	100
CA706/1	Imax.: 32 A 100
CA707/L/Q/01	100
CA714/2	Imax.: 32 A 100
CA714/3	32 A 100
CA714/4	32 A 100
CA714/10	32 A 20
CA707/TS/01	100
CA509/K6	100
SCS0.6/3.5	Blade size: 0.6 x 3.5 mm 10

**CTS4UN**



6 x 43 mm

46.2 mm / 53.7 mm / 51.1 mm

IEC	UL - CSA
0.2 - 4.0 mm <sup>2</sup>	22 - 10 AWG
0.2 - 6.0 mm <sup>2</sup>	
0.2 - 4.0 mm <sup>2</sup>	22 - 10 AWG
0.2 - 2.5 mm <sup>2</sup>	22 - 12 AWG
0.2 - 2.5 mm <sup>2</sup>	22 - 12 AWG

8 mm

IEC60947-7-1 UL-1059 CSA22.2-158 IEC 60079-7

1000 V	600 V	600 V	690 V
32 A	40 A*	40 A*	28 A
0.5 Nm	7 lb-in	7 lb-in	0.5 Nm

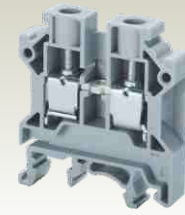


Polyamide 66 / 1

8 KV / 3

Type / Cat. No.	Standard Pack
CTS4UN	100
EP2.5/4UN	50
PP2.5/4UN	50
SP2.5/4UN	100
CA701	50 m
CA701-15	50 m
CA501	50 m
CA702	50
CA802	50
CA722/2	Imax.: 32 A 100
CA722/3	32 A 100
CA722/4	32 A 100
CA722/10	32 A 10
CA722/100	32 A 10
CA742/2	Imax.: 32 A 100
CA742/3	32 A 100
CA742/4	32 A 100
CA742/10	32 A 10
CA742/100	32 A 10
CA703/1	Imax.: 32 A 100
CA704/1	32 A 100
CA705/1	32 A 100
CA732/10	32 A 100
CA732/10-A	32 A 100
CA732/100	32 A 10
CA707/S/Q/01	100
CA706/1	Imax.: 32 A 100
CA707/L/Q/01	100
CA714/2	Imax.: 32 A 100
CA714/3	32 A 100
CA714/4	32 A 100
CA714/10	32 A 20
CA707/TS/01	100
CA509/K6	100
SCS0.6/3.5	Blade size: 0.6 x 3.5 mm 10

**CTS6U**



8 x 43 mm

47.8 mm / 55.5 mm / 52.8 mm

IEC	UL - CSA
0.5 - 6.0 mm <sup>2</sup>	22 - 8 AWG
0.5 - 6.0 mm <sup>2</sup>	
0.5 - 6.0 mm <sup>2</sup>	22 - 8 AWG
0.5 - 4.0 mm <sup>2</sup>	22 - 10 AWG
0.5 - 4.0 mm <sup>2</sup>	22 - 10 AWG

9 mm

IEC60947-7-1 UL-1059 CSA22.2-158 IEC 60079-7

1000 V	600 V	600 V	690 V
41 A	50 A	50 A	36 A
0.8 Nm	14 lb-in	14 lb-in	0.8 Nm



Polyamide 66 / 1

8 KV / 3

Type / Cat. No.	Standard Pack
CTS6U	100
EP6/10U	50
PP6/10U	50
SP6/10U	100
CA701	50 m
CA701-15	50 m
CA501	50 m
CA702	50
CA802	50
CA723/2	Imax.: 41 A 100
CA723/3	41 A 50
CA723/4	41 A 50
CA723/10	41 A 10
CA743/2	Imax.: 41 A 100
CA743/3	41 A 50
CA743/4	41 A 50
CA743/10	41 A 10
CA703/2	Imax.: 41 A 100
CA704/2	41 A 100
CA705/2	41 A 100
CA733/10	41 A 100
CA707/S/Q/1	100
CA706/2	Imax.: 41 A 100
CA707/L/Q/1	100
CA710/2	Imax.: 41 A 100
CA710/3	41 A 100
CA710/4	41 A 100
CA710/10	41 A 20
CA707/TS/05	100
CA509/K8	100
SCS0.8/4	Blade size: 0.8 x 4 mm 10

\* 40 Amp with two 12 AWG wires & 35 Amp with one 10 AWG wire