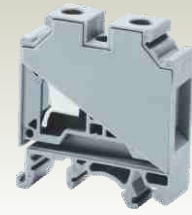


STANDARD FEED THROUGH TERMINAL BLOCKS

CTS10U

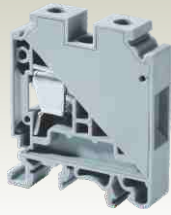


CTS16U



Width (Thickness) x Length	10 x 43 mm				12 x 43 mm					
Height with DIN 35 x 7.5 / 35 x 15 / 32 mm Rail	47.8 mm / 55.5 mm / 52.8 mm				47.8 mm / 55.5 mm / 52.8 mm					
Connection Possibility as per	IEC		UL - CSA		IEC		UL - CSA			
	With 1 Conductor per clamp		16 - 6 AWG		20 - 4 AWG					
With 2 same size Conductors per clamp	Stranded / Flexible		16 - 6 AWG		20 - 4 AWG					
	Solid with Ferrule / Lug		16 - 10 AWG		20 - 8 AWG					
Wire Stripping Length	0.5 - 10.0 mm ²		16 - 10 AWG		0.2 - 16.0 mm ²		20 - 8 AWG			
	0.5 - 6.0 mm ²		16 - 10 AWG		0.2 - 10.0 mm ²		20 - 8 AWG			
Ratings As Per	IEC60947-7-1	UL-1059	CSA22.2-158	IEC 60079-7	IEC60947-7-1	UL-1059	CSA22.2-158	IEC 60079-7		
Voltage	1000 V	600 V	600 V	690 V	1000 V	600 V	600 V	690 V		
Current	57 A	65 A	65 A	50 A	76 A	85 A	70 A	66 A		
Torque	1.2 Nm	14 lb-in	14 lb-in	1.2 Nm	1.2 Nm	14 lb-in	14 lb-in	2.0 Nm		
Approvals										
Insulation Material / Comparative Tracking Index	Polyamide 66 / 1				Polyamide 66 / 1					
Rated Impulse Voltage / Pollution Degree	8 KV / 3				8 KV / 3					
	Type / Cat. No.			Standard Pack	Type / Cat. No.			Standard Pack		
Terminal Block	CTS10U			100	CTS16U			50		
End Plate	EP6/10U			50						
Partition Plate	PP6/10U			50						
Separator Plate	SP6/10U			100	SP6/10U			100		
Mounting Rail (Refer Pg. 154 for details)	CA701			50 m	CA701			50 m		
	CA701-15			50 m	CA701-15			50 m		
	CA501			50 m	CA501			50 m		
End Clamp (Refer Pg. 155 for details)	CA702			50	CA702			50		
	CA802			50	CA802			50		
Pre Assembled Shorting Links	2 pole	CA724/2		Imax.: 57 A	100	2 pole	CA751/2		Imax.: 76 A	100
	3 pole	CA724/3		57 A	50	3 pole	CA751/3		76 A	50
	4 pole	CA724/4		57 A	50	4 pole	CA751/4		76 A	50
	10 pole	CA724/10		57 A	10	10 pole	CA751/10		76 A	10
		CA744/2		Imax.: 57 A	100		CA761/2		Imax.: 76 A	100
Insulated Pre Assembled Shorting Link	3 pole	CA744/3		57 A	50	3 pole	CA761/3		76 A	50
	4 pole	CA744/4		57 A	50	4 pole	CA761/4		76 A	50
	10 pole	CA744/10		57 A	10	10 pole	CA761/10		76 A	10
		CA703/3		Imax.: 57 A	100		CA703/8		Imax.: 76 A	100
	Permanent Shorting Links	3 pole	CA704/3		57 A	100	3 pole	CA704/8		76 A
4 pole		CA705/3		57 A	100	4 pole	CA705/8		76 A	100
10 pole		CA734/10		57 A	100	10 pole	CA739/10		76 A	100
		CA707/S/Q/1			100		CA707/S/Q/1			100
Switchable Shorting Links	CA706/3			Imax.: 57 A	100					
Long Sleeve & Screw for Switchable Shorting Links	CA707/L/Q/1			100						
Insulated External Shorting Links	2 pole	CA718/2		Imax.: 57 A	100					
	3 pole	CA718/3		57 A	50					
	4 pole	CA718/4		57 A	50					
	10 pole	CA718/10		57 A	20					
Test Socket	CA707/TS/05			100	CA707/TS/05			100		
Marking Tags (Refer Pg. 157 for details)	CA509/K10			100	CA509/K12			100		
Screw Driver	SCS0.8/4	Blade size: 0.8 x 4 mm		10	SCS1.0/5.5	Blade size: 1.0 x 5.5 mm		10		

CTS25UN



12 x 49 mm
57.2 mm / 64.7 mm / 62.3 mm

IEC	UL - CSA
4.0 - 25.0 mm ²	12 - 4 AWG
4.0 - 25.0 mm ²	12 - 4 AWG
4.0 - 16 mm ²	12 - 6 AWG
4.0 - 10 mm ²	12 - 8 AWG

14 mm

IEC60947-7-1 UL-1059 CSA22.2-158 IEC 60079-7

1000 V	600 V	600 V	690 V
101 A	85 A	85 A	88 A
2.0 Nm	18 lb-in	18 lb-in	2.0 Nm



Polyamide 66 / 1

8 KV / 3

Type / Cat. No.	Standard Pack
CTS25UN	50
PP25UN	50
CA701	50 m
CA701-15	50 m
CA501	50 m
CA702	50
CA802	50
CA725/2	I _{max.} : 101 A
CA725/3	101 A
CA725/4	101 A
CA725/10	101 A
CA745/2	I _{max.} : 101 A
CA745/3	101 A
CA745/4	101 A
CA745/10	101 A
CA703/4	I _{max.} : 101 A
CA704/4	101 A
CA705/4	101 A
CA735/10	101 A
CA707/S/Q/2	100
CA707/TS/06	100
CA509/K12	100
SCS1.0/5.5	Blade size: 1.0 x 5.5 mm

CTS35UN



16 x 50.5 mm
59.2 mm / 66.7 mm / 64.3 mm

IEC	UL - CSA
4.0 - 35.0 mm ²	12 - 2 AWG
4.0 - 35.0 mm ²	12 - 2 AWG
4.0 - 16.0 mm ²	12 - 4 AWG
4.0 - 16.0 mm ²	12 - 8 AWG

15 mm

IEC60947-7-1 UL-1059 CSA22.2-158 IEC 60079-7

1000 V	600 V	600 V	800 V
125 A	130 A	130 A	109 A
2.5 Nm	25 lb-in	25 lb-in	2.5 Nm

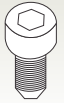
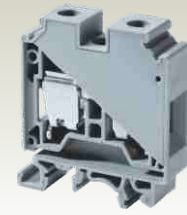


Polyamide 66 / 1

8 KV / 3

Type / Cat. No.	Standard Pack
CTS35UN	50
PP35UN	50
CA701	50 m
CA701-15	50 m
CA501	50 m
CA702	50
CA802	50
CA771/2	I _{max.} : 125 A
CA771/3	125 A
CA771/4	125 A
CA771/10	125 A
CA781/2	I _{max.} : 125 A
CA781/3	125 A
CA781/4	125 A
CA781/10	125 A
CA703/10	I _{max.} : 125 A
CA704/10	125 A
CA705/10	125 A
CA770/10	125 A
CA707/S/Q/2	100
CA707/TS/06	100
CA509/K16	100
SCS1.0/5.5	Blade size: 1.0 x 5.5 mm

CTS35UNA



With Allen screw

16 x 50.5 mm
59.2 mm / 66.7 mm / 64.3 mm

IEC	UL - CSA
4.0 - 35.0 mm ²	12 - 2 AWG
4.0 - 35.0 mm ²	12 - 2 AWG
4.0 - 16.0 mm ²	12 - 4 AWG
4.0 - 16.0 mm ²	12 - 8 AWG

15 mm

IEC60947-7-1

1000 V	600 V	600 V	800 V
125 A			
2.5 Nm			



Polyamide 66 / 1

8 KV / 3

Type / Cat. No.	Standard Pack
CTS35UNA	50
PP35UN	50
CA701	50 m
CA701-15	50 m
CA501	50 m
CA702	50
CA802	50
CA771/2	I _{max.} : 125 A
CA771/3	125 A
CA771/4	125 A
CA771/10	125 A
CA781/2	I _{max.} : 125 A
CA781/3	125 A
CA781/4	125 A
CA781/10	125 A
CA703/10	I _{max.} : 125 A
CA704/10	125 A
CA705/10	125 A
CA770/10	125 A
CA707/S/Q/2	100
CA707/TS/06	100
CA509/K16	100
SCS1.0/5.5	Blade size: 1.0 x 5.5 mm