

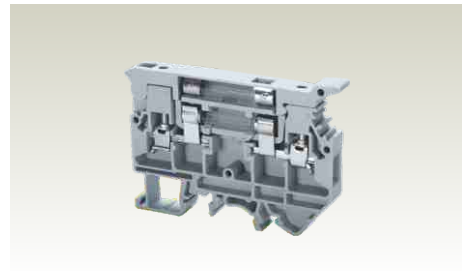
# FUSE TERMINAL BLOCKS

These Terminal Blocks are used in electrical and control systems which require fuse protection.

The CAFL series accepts  $\varnothing\frac{1}{4}$ " x 1" and  $\varnothing\frac{1}{4}$ " x  $1\frac{1}{4}$ " ( $\varnothing6.3$  x 32 mm) fuses. Fuse blocks with suffix (L), (N) are used for off-line indication in case of a fuse blow out.

These blocks can be used with AC & DC voltages.

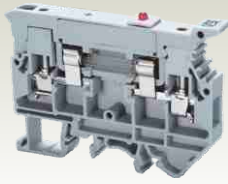
## CAFL4U



Width (Thickness) x Length	9 x 72 mm		
Height with DIN 35 x 7.5 / 35 x 15 / 32 mm Rail	55.3 mm / 63.0 mm / 60.3 mm		
Connection Possibility as per	IEC	UL - CSA	
With 1 Conductor per clamp	Stranded / Flexible	0.2 - 4.0 mm <sup>2</sup>	22 - 10 AWG
	Solid	0.2 - 6.0 mm <sup>2</sup>	
With 2 same size Conductors per clamp	with Ferrule / Lug	0.2 - 4.0 mm <sup>2</sup>	22 - 10 AWG
	Stranded / Flexible with TWIN Ferrule / Lug	0.2 - 2.5 mm <sup>2</sup>	22 - 12 AWG
Wire Stripping Length	9.5 mm		
Ratings As Per	IEC60947-7-3	UL-1059	CSA22.2-158
Voltage	1000 V	600 V	600 V
Current	6.3 A	16 A	16 A
Torque	0.5 Nm	7 lb-in	7 lb-in
Approvals			
Insulation Material / Comparative Tracking Index	Polyamide 66 / 1		
Rated Impulse Voltage / Pollution Degree	5 KV / 3		
Fuse Size	$\varnothing\frac{1}{4}$ " x 1", $\varnothing\frac{1}{4}$ " x $1\frac{1}{4}$ " ( $\varnothing6.3$ x 32 mm)		

Fuse Indication		Type / Cat. No.	Standard Pack
Terminal Block	With Fuse	CAFL4U	25
	Without Fuse	CAFL4UW/F	25
	For 6 - 60 V AC/DC		
	For 110 - 240 V AC/DC		
	For 24 V AC/DC		
	For 48 V AC/DC		
	For 110 V AC/DC		
	For 220 V AC/DC		
	For 300 V AC		
End Plate		EPCAFL4U	50
Partition Plate			
Mounting Rail (Refer Pg. 154 for details)		CA701	50 m
		CA701-15	50 m
		CA501	50 m
End Clamp (Refer Pg. 155 for details)		CA702	50
		CA802	50
Insulated External Shorting Links	2 pole	CA716/2	I <sub>max.</sub> : 32 A / 100
	3 pole	CA716/3	32 A / 50
	4 pole	CA716/4	32 A / 50
	10 pole	CA716/10	32 A / 20
Marking Tags	On Terminal	CA509/K9	100
	Continuous Tag	CA509/K9F	10
Screw Driver		SCS0.6/3.5	Blade size: 0.6 x 3.5 mm / 10

**CAFL4UL**



9 x 72 mm

55.3 mm / 63.0 mm / 60.3 mm

IEC	UL - CSA
0.2 - 4.0 mm <sup>2</sup>	22 - 10 AWG
0.2 - 6.0 mm <sup>2</sup>	
0.2 - 4.0 mm <sup>2</sup>	22 - 10 AWG
0.2 - 2.5 mm <sup>2</sup>	22 - 12 AWG
0.2 - 2.5 mm <sup>2</sup>	22 - 12 AWG

9.5 mm

IEC60947-7-3 UL-1059 CSA22.2-158

1000 V	600 V	600 V
6.3 A	16 A	16 A
0.5 Nm	7 lb-in	7 lb-in



Polyamide 66 / 1

5 KV / 3

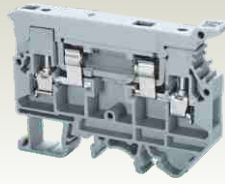
Ø1/4" x 1", Ø1/4" x 1 1/4" (Ø6.3 x 32 mm)

24 V AC / DC, 48 V AC / DC, 110 V AC / DC, 220 V AC / DC

Type / Cat. No.	Standard Pack
CAFL4UL/24V	25
CAFL4UL/48V	25
CAFL4UL/110V	25
CAFL4UL/220V	25
EPCAFL4U	50

CA701	50 m	
CA701-15	50 m	
CA501	50 m	
CA702	50	
CA802	50	
CA716/2	Imax.: 32 A	100
CA716/3	32 A	50
CA716/4	32 A	50
CA716/10	32 A	20
CA509/K9	100	
CA509/K9F	10	
SCS0.6/3.5	Blade size: 0.6 x 3.5 mm	10

**CAFL4UN**



9 x 72 mm

55.3 mm / 63.0 mm / 60.3 mm

IEC	UL - CSA
0.2 - 4.0 mm <sup>2</sup>	22 - 10 AWG
0.2 - 6.0 mm <sup>2</sup>	
0.2 - 4.0 mm <sup>2</sup>	22 - 10 AWG
0.2 - 2.5 mm <sup>2</sup>	22 - 12 AWG
0.2 - 2.5 mm <sup>2</sup>	22 - 12 AWG

9.5 mm

IEC60947-7-3 UL-1059 CSA22.2-158

1000 V	600 V	600 V
6.3 A	16 A	16 A
0.5 Nm	7 lb-in	7 lb-in



Polyamide 66 / 1

5 KV / 3

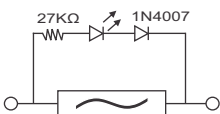
Ø1/4" x 1", Ø1/4" x 1 1/4" (Ø6.3 x 32 mm)

110 - 220 V AC & DC & 300 V AC

Type / Cat. No.	Standard Pack
CAFL4UN/110V *	25
CAFL4UN/220V	25
EPCAFL4U	50

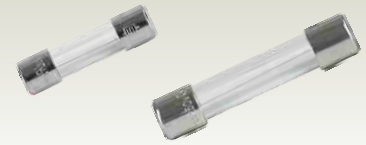
CA701	50 m	
CA701-15	50 m	
CA501	50 m	
CA702	50	
CA802	50	
CA716/2	Imax.: 32 A	100
CA716/3	32 A	50
CA716/4	32 A	50
CA716/10	32 A	20
CA509/K9	100	
CA509/K9F	10	
SCS0.6/3.5	Blade size: 0.6 x 3.5 mm	10

\* CAFL4UN/110 : 110 - 220 V AC & DC



LED Circuit for offline indication in CAFL4UL24V

**FUSES**



Current Rating	Fast Blow Ø5 x 20mm Cat. No.	Slow Blow Ø5 x 20mm Cat. No.
0.1 A	FB5X200.1A	SB5X200.1A
0.5 A	FB5X200.5A	SB5X200.5A
0.63 A	FB5X200.63A	SB6X320.63A
1 A	FB5X201A	SB5X201A
2 A	FB5X202A	SB5X202A
3 A	FB5X203A	SB5X203A
4 A	FB5X204A	SB5X204A
5 A	FB5X205A	SB5X205A
6 A	FB5X206A	SB5X206A
6.3 A	FB5X206.3A	SB5X206.3A

Current Rating	Fast Blow Ø1/4" x 1 1/4" Cat. No.
0.1 A	FB6X320.1A
0.5 A	FB6X320.5A
0.63 A	FB6X320.63A
1 A	FB6X321A
2 A	FB6X322A
3 A	FB6X323A
4 A	FB6X324A
5 A	FB6X325A
6 A	FB6X326A
6.3 A	FB6X326.3A