

**Set de Conectores Industriales
(Macho y Hembra)**

SERIE Ciset

MODELO	CORRIENTE	POLOS + TIERRA	TIPO	PRENSA-CABLE	VOLTAJE DE OPERACIÓN
Ciset3PM	10 Amp	3P	Hembra Incrustable y Macho Recto	M20	240VCA
Ciset4PM		4P			
Ciset6PM	16 Amp	6P	Hembra Incrustable y Macho Lateral	M25	450VCA
Ciset10PM		10P			
Ciset16PM		16P			
Ciset24PM		24P		M40	
Ciset32PM		32P			
Ciset48PM		48P			
RANGO DE TEMPERATURA	-40 °C a 125 °C				
GRADO DE PROTECCIÓN	IP65				
MATERIAL	ALUMINIO				



CISSET3PM



CISSET4PM



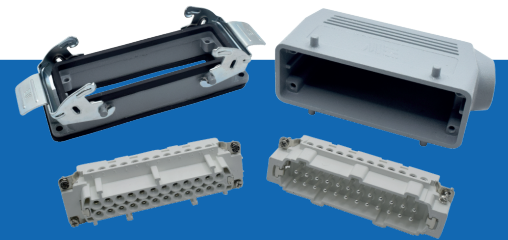
CISSET6PM



CISSET10PM



CISSET16PM



CISSET24PM



CISSET32PM



CISSET48PM